

W

hat does **JIA** stand for?

Juvenile - means that your arthritis began before you were 16.

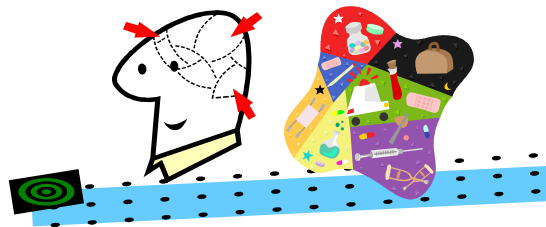
Idiopathic - means that the cause of your arthritis is not known.

Arthritis - means that one or more of your joints are inflamed.

* Even when you are over 16 Doctor's will still use the term **JIA** as this is different to adult forms of arthritis, such as Rheumatoid arthritis.*

Data Protection

We collect information about you and your family relevant to your diagnosis and treatment. We store it in written records and on computer. We may have to share some of your information people and organisations. If you have any questions and/or do not want us to share that information with others, please talk to the Rheumatology team or contact PALS (Patient Advice and Liaison Service) on 0121 333 8403/8611.



Department of Rheumatology

www.dreamteam-uk.org

Website of the Adolescent Rheumatology team at Birmingham Children's Hospital

Occupational therapy - 0121 333 8213

Physiotherapy - 0121 333 8221

Nurses - 0121 333 8219

Find out more....

Arthritis Research UK booklets:

www.arthritisresearchuk.org

- Arthritis—A guide for teenagers
- Your child has arthritis
- When a young person has Arthritis (teachers booklet)

Chat - Children Have Arthritis Too!

- CHAT Booklet
- CHAT 2 Parents (For parents of teenagers)

Both available to download at www.ccaa.org.uk

Breakout

www.arthritiscare.org.uk

Birmingham Children's Hospital 
NHS Foundation Trust

A mindmap of JIA

Who gets it ?

What is it ?

Juvenile Idiopathic Arthritis

What can I do ?

Who else will help ?

